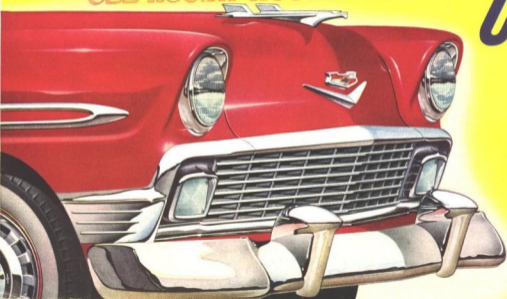


SEE ROSEN-NOVAK LAST



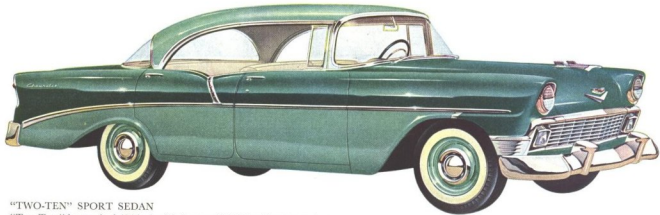
Chevrolet

1956

ROSEN-NOVAK
Chevrolet

2560-62 FARNAM ST.
PHONE HARNEY 6090
OMAHA, NEBRASKA

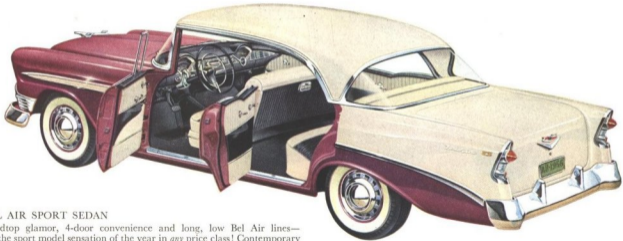
Introducing the All-New "Two-Ten" 4-Door Sport Sedan



"TWO-TEN" SPORT SEDAN

"Two-Tens" have a fresh '56 look of their own, highlighted by a sweeping speedline of chrome and a distinctive new two-tone treatment. In this 4-door hardtop, rear doors are hinged to sturdy body members. "Two-Ten" interiors feature charcoal gray pattern cloth trimmed with Starfrost vinyl.

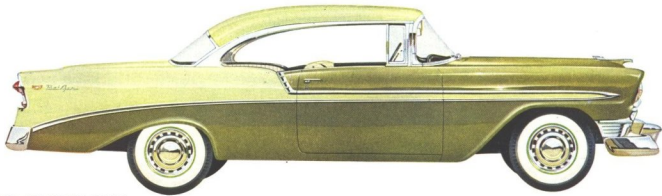
Introducing the All-New Bel Air 4-Door Sport Sedan



BEL AIR SPORT SEDAN

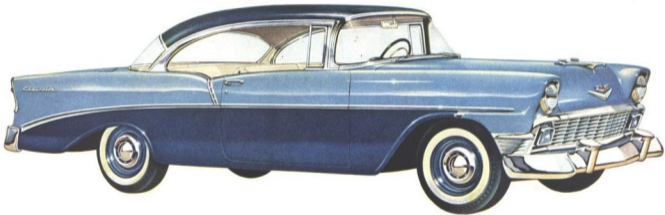
Hardtop glamor, 4-door convenience and long, low Bel Air lines—*it's the sport model sensation of the year in any price class!* Contemporary interior styling features rich charcoal gray trimmed with ivory vinyl.

Your Choice of Two Lively New Sport Coupes!



BEL AIR SPORT COUPE

For '56—bold new Motoramic styling from handsomely recessed headlamps to rakish rear fender cutouts . . . new colors and combinations to choose from . . . the brilliant performance of V8 or 6 . . . plus traditional Chevrolet quality in every detail!



"TWO-TEN" SPORT COUPE

Chevrolet's *fourth* hardtop for 1956—this spirited sport model, a star of the "Two-Ten" Series! You'll like its roominess and fine-car feeling, its silk-smooth, road-hugging ride! Best of all, you'll like its low price.



Bel Air 4-Door Sedan

19 New Models! The biggest, brightest, most beautiful selection in Chevrolet history!



"TWO-TEN" 4-DOOR SEDAN



"ONE-FIFTY" 4-DOOR SEDAN



"TWO-TEN" BEAUVILLE
4-Door, 9-Passenger Station Wagon

With 19 new models in three great series—featuring four hardtops and six station wagons (two of them nine-passenger)—it's the widest, most exciting choice of Chevrolets ever! Individually, each series is quickly identified by its own speedline chrome styling—distinctively different on Bel Air, "Two-Ten"



"TWO-TEN" DELRAY CLUB COUPE



"TWO-TEN" TOWNSMAN
4-Door, 6-Passenger Station Wagon

and "One-Fifty" models. New Contemporary interior styling is featured in all models, with new Custom-Colored interiors available on Bel Air and "Two-Ten" models at extra cost. With 10 solid colors and 14 two-tone combinations, Chevrolet for '56 blends fine-car quality with distinctive and youthful good looks!



"ONE-FIFTY" UTILITY SEDAN



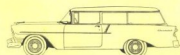
"TWO-TEN" HANDYMAN
2-Door, 6-Passenger Station Wagon



BEL AIR 2-DOOR SEDAN



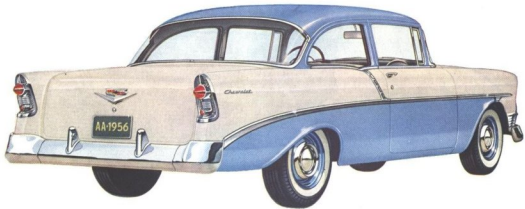
"ONE-FIFTY" 2-DOOR SEDAN



"ONE-FIFTY" HANDYMAN
2-Door, 6-Passenger Station Wagon



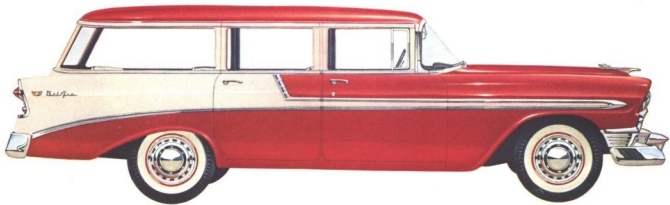
Bel Air Nomad



"Two-Ten" 2-Door Sedan



Bel Air Convertible



Bel Air Beauville 4-Door, 9-Passenger Station Wagon

Fine-Car Features Throughout!



A WIDE, SAFE VIEW — rakish, panoramic windshield, crank-operated ventipanes and four-fender visibility from the driver's seat!

HIGH-LEVEL VENTILATION — provides a comfortable car climate in any weather. Air is taken in over the hood, above road heat and dirt.

V8 OR 6 — name your power! A new "Blue-Flame 140" high-compression 6, the brilliant "Turbo-Fire V8," or, optional at extra cost, the record-smashing "Super Turbo-Fire V8"!

POWERGLIDE — oil smooth and lightning-fast on the getaway!

OVERDRIVE — cuts fuel costs and cruises like a dream! Both extra-cost options.

GLIDE-RIDE FRONT SUSPENSION — rolls the bumps smooth! There's less noise, less vibration . . . driving's more fun!

ANTI-DIVE BRAKING — an exclusive Chevrolet development that all but eliminates "nose-down," even when you stop in a hurry. It's safer, too!

TUBELESS TIRES — at no extra cost. They're safer—less chance of a blowout—and easier to repair if punctured!

OUTRIGGER REAR SPRINGS — mounted *outside* the frame for better stability on turns and curves. There's less body roll, more riding comfort!

BODY BY FISHER — traditional quality, fine craftsmanship, and exclusive with Chevrolet in its field!

ALL-WEATHER AIR CONDITIONING — provides both heating and cooling from one compact unit, located under the hood. (Optional on V8 models except convertible.)

ALL POWER OPTIONS — Power Brakes and Power Steering, Power-controlled windows and Power-positioned front seat (on Bel Air and "Two-Ten" models) — all optional at extra cost.

CONCEALED GAS FILLER — located *behind* the left rear tail lamp. Out of sight, but handy as ever!



All illustrations and specifications contained in this literature are based on the latest product information available at the time of publication approval. The right is reserved to make changes at any time without notice in prices, colors, materials, equipment, specifications and models, and also to discontinue models. CHEVROLET MOTOR DIVISION OF GENERAL MOTORS CORPORATION, DETROIT 2, MICHIGAN.